

# CHAMBERLINES

## Congratulations Leadership Anson Class of 2011!

The Leadership Anson (LA) program graduated 12 future leaders during a ceremony held June 14th at Welika Lake Fish House. Leadership Anson was created to develop a commitment to community through leadership. This marks the 15<sup>th</sup> class; graduating a total of 241 participants. A number of family, friends, and sponsors of the program attended this special event.



Chamber Director Lynn Edwards recognized all board members in attendance; Lewis Evans, Chair; Ashlie Jones, Vice Chair; Derek James, Brandis Chewning, and Mary Little. She also thanked all of the supporters and sponsors of the Leadership Anson program. Among those were the Elizabeth B. Yost Trust, Effie Allen Little Foundation, and the William A. Trust Foundation along with scholarship donors, Anson Bank & Trust, Anson

The speaker for the evening was Scott Collier of SPCC and Leadership Anson instructor. He centered his comments around one idea, a request for each class member. "Look around, see what needs to be done, take the lead, and ask others to get involved with you," stated Collier. He explained how most involvement comes from someone doing one simple thing: asking a question. He gave an example of a question given to him by Fred Sparger, "I'm working on a new position at the College, Scott, and wondered if you would come by and talk to us about it. That was 20 years ago," he said. Collier also gave a great reflection of the entire program pointing out all the examples of someone that looked around, saw something that needed to be done, took the lead, and asked others to get involved.

Front Row (l-r): Andrea Cash, Pee Dee Electric; Lakeisha Tillman, Anson Co. Partnership for Children; Brenda Huntley, Anson Comm. Hospital; Kelly Gaddy, Carolina's Primary Care; Brett Blalock, Anson Co. EMS  
Back Row (l-r): Susan Poe, Valley Protein; Scott Rivers, SPCC; Sam Jones, Wadesboro Police Dept.; Vivian Wallace, Anson Comm. Hospital; Toby Carpenter, SPCC; Ginger Phillips, Anson Co. 911; Traquita Little, Britt Insurance Agency, HOLLA  
Photo by Christie Edwards

"We hope you learned a lot about Anson County that you did not know before and we also hope you learned a little more about yourself," Collier stated. He went on to say that he also hopes each class member saw some opportunities where they might put their unique gifts and talents to use for the greater good of the community.

Women's League, Anson Writer's Club, and Wadesboro Rotary Club. A special thank you went to last year's LA class for their donation of a scholarship in memory of TJ Jarman, the late son of Tommy Jarman who participated in the Leadership Anson class of 2009.

Each Class member earned a Continuing Education certificate from South Piedmont Community College and received a Leadership Plaque from the Anson County Chamber of Commerce. These were presented to them by Lynn Edwards, Chamber Director and Scott Collier, SPCC. Jilla Gathings, LA Oversight Committee Chair, (class of 2006) assisted throughout the year and with the organization of the graduation ceremony for the evening.

## Endowed scholarship established in McKay's honor



June 21, 2011  
FOR IMMEDIATE RELEASE

WINGATE – An endowed scholarship has been established in honor of retiring South Piedmont Community College President John McKay. With \$26,755 already contributed and more coming in, the scholarship was revealed to a surprised McKay during a reception in his honor Monday at the Jesse Helms Center.

"I was speechless," McKay said. "It was a total surprise, both the scholarship and the amount. I'm really appreciative of the individuals and businesses who donated to it."

"One of my goals has been to help increase our scholarship amount, because we know our students need more help," McKay said. "This just fits in with that. It's nice that they decided this was the way to remember me, because I have a strong feeling that we need more scholarships to help our residents come to school."

"We knew that he was going to be pleased with it," said SPCC Foundation Executive Director Hayne White, noting that keeping it a secret from McKay was the hardest part. "We've had a scholarship endowment campaign going on for some time. We knew it was near and dear to his heart."

McKay also received a framed resolution honoring him from the SPCC Board of Trustees, a plaque from Anson County Early College, a shield from the Monroe Police



John McKay, Harvey Leavitt  
John McKay, left, listens as SPCC Board of Trustees Chairman Harvey Leavitt announces the establishment of the John McKay Presidential Scholarship during a reception in McKay's honor Monday at the Jesse Helms Center in Wingate. McKay will retire June 30.

Department, season tickets to the Broadway Lights Series at the Blumenthal Performing Arts Center from the college and several other gifts.

McKay has been SPCC's president for eight years. His last day will be June 30.

**Serving Anson County Since 1963**



## 2011 Anson Ag Expo & Fair Set for September 23-24

### News Release

Janine Rywak, County Extension Director  
704-694-2915/2415

Mark your calendars for this year's annual Anson Ag Expo & Fair. Slated for this fall, the 2011 Anson Ag Expo and Fair Planning Committee is gearing up for events to promote agriculture and natural resources, and their economic importance to Anson County.

This year's festivities will be held Friday and Saturday, September 23-24 at the Lockhart-Taylor Center of SPCC in Wadesboro. This fall, plan to visit the fair exhibits on display both Friday night and Saturday in the Ingram Room.

The event promises an array of activities and fun, along with some new attractions.

Friday's offerings will begin at 6:00 pm with the annual Ag Fair being exhibited in the Ingram Room and the Youth Livestock Show in the parking area.

Saturday will feature those same events continuing at 9:00 am, with the addition of the South Atlantic Woodsmen's Association lumberjack sports competition in the afternoon. All events are free to the public.

Be on the lookout for more information to come, including time schedules, children's activities, and much more. Come out and join the fun. Celebrate agriculture in Anson.

### In Memorium

Our prayers go out to the family of Mary Little, Chamber Board Member, who passed on Thursday, June 23rd. She will be missed greatly.

## First Rotary Cornhole Tournament: A BIG Success!!



The first Rotary Cornhole Tournament was a big success with 11 teams competing. It was held in conjunction with the first Summer Jam and 5K Run/Walk in Uptown Wadesboro on June 3<sup>rd</sup>. Pictured above are 1st Place Champions Kipper Melmige and Jeremy Clarke from Albemarle, NC. Thank you to all the Rotarians that helped plan and promote this event, donated boards, or came out to help. A special thanks to Jason Kiker, Kiker Resource Management, for sponsoring the tournament and to Don Scarborough for the use of the parking lot. The Cornhole Tournament was definitely a success and we expect even more teams to participate in August. Check out the other teams and event photos on the Wadesboro Rotary Club Facebook Page.



### New Member Sketches

*The following have joined the Chamber for Fiscal Year 2011*

**On the Move Transportation, LLC.**  
Diane Parson, P.O. Box 371, Morven, N.C. 28119, Phone: 866-531-5388.

**Whitley Lawn & Garden Inc.**  
Chad Whitley, 4308 Pageland Hwy, Monroe, N.C. 28112, Phone: 704-764-3910, Fax: 704-764-8072, website: [www.whitleylawn.com](http://www.whitleylawn.com).



## BB&T

Best Bank In Town  
Since 1872

**We're more than a bank. We're your neighbors.**

**BB&T Wadesboro Main**  
111 East Caswell Street  
704-694-6521

**BB&T Ansonville**  
8813 Highway 52 North  
704-826-8315

**BANKING INSURANCE INVESTMENTS**

BBT. Member FDIC. Only deposit products are FDIC insured. ©2007 BB&T. BBT.com

**PLACE  
YOUR AD  
HERE!**

**CALL THE CHAMBER:  
704.694.4181**



## Want to learn more about historical uptown Wadesboro?

The Anson County Historical Society has just released a new publication entitled "A Walk through Historical Uptown Wadesboro." This is a self-guided, walking tour of the historical buildings and structures in the Wadesboro business district. The tour begins and ends at the Anson County Historical Society office on East Wade Street. Stops along the way include museums, churches and homes, such as the Boggan-Hammond House, which is the oldest house in Wadesboro circa 1796. The booklet includes interesting information about each of the buildings and, in some cases, its inhabitants. The tour provides a great way to spend an afternoon learning about the early history of Wadesboro. This project has been a joint effort of the Anson County Historical Society and the Anson County Chamber of Commerce. You may pick up your copy of the publication at the Chamber office. The cost is \$5.



Pictured above: Mayor Solomon and her husband, Family Dollar General Manager, Kristy Whitaker; just behind her, District Mgr. Jim Margita; Chamber Director, Lynn Edwards; Chamber Chair, Lewis Evans; Co. Commissioner, Ross Streater; Police Chief, Richard Little along with other Family Dollar employees.

## Grand Opening for Family Dollar

A Grand Opening Ceremony was held on June 25th for Family Dollar in Morven. This event brought out a number of people to celebrate this special occasion. "This is truly a great day for Morven," stated the Chamber Director. "What a historical day this is for our town," Mayor Solomon said. She also thanked God for blessing them on this day. Lewis Evans also mentioned what a good day this was and how great it is for our economy. Co. Commissioner Chair Anna Baucom stated how truly delighted she was to be there but that she would miss all the folks that would now be shopping in Morven instead of Wadesboro. Kristy Whitaker and Jim Margita both thanked everyone for their support and said they are looking forward to serving the people of Morven and Anson County. Other dignitaries attending were Morven Councilwoman Majorie Cole, Co. Manager Lawrence Gatewood and Morven Police Officer Robert Mims. Family Dollar has 13 employees for now but will have seven permanent employees once they are up and running on a normal basis.

**EMBELLISH**  
Custom Embroidery  
Mount Croghan, SC  
(843) 634-2175  
EmbellishLLC@gmail.com  
If we can hoop it,  
we can stitch it.  
HATS/SHIRTS/JACKETS/MORE  
Your apparel or ours.  
Pick-up/delivery available.

## Anson's Community Real Estate Company



### Plank Road Realty

'Your Hometown Realtors'

**704-694-9570**

Toll-Free: (800) 694-9755

E-Mail: [homes@plankroadrealty.com](mailto:homes@plankroadrealty.com) ■ Website: [www.plankroadrealty.com](http://www.plankroadrealty.com)

209 East Wade Street, Wadesboro, N.C., 28170

Residential • Commercial • Land • Rentals



ENERGY HELP | community service

**WE DELIVER ELECTRICITY TO HOMES –**  
and share our energy with the community.



©2011 Progress Energy Carolinas, Inc.

## TERMINIX®

Professional Termite and Pest Control  
Fire Ant Control  
Mosquito Management  
Crawl Space Dehumidification  
Irrigation and Landscape Curbing

NEW!  
Attic & Crawl space Insulation  
Gutter Protection System

**Free Estimate!**

Monroe: 291-9395  
Wadesboro: 694-4844  
[TrustTerminix.com](http://TrustTerminix.com)



## CALENDAR

- The Chamber of Commerce Marketing Committee will meet at 8:00 a.m. on Thursday, July 14.
- The Chamber of Commerce Board of Directors will meet at 7:30 a.m. on Tuesday, July 19.
- The AEDC will not meet in the month of July.
- Uptown Wadesboro Inc. will meet at 5:00 p.m. on Thursday, July 21.

All of the above meetings will be held at the Chamber of Commerce.

### Upcoming Calendar Events

**July 2-6-9-13-16-20-23-27-30**, Anson Co. **Farmers Market** located on US Hwy 52 South, will be open from 7:00am until 1:00pm.

**July 7-14-21-28**, The Uptown Wadesboro **Farmers Market** will be open on the square from 4:00pm until 6:00pm.

**July 8-9**, The 19th annual **Championship Rodeo** will be held at Circle G Arena at 301 N. Cowan St. in Lilesville. Fireworks, live band and dancing both nights.

**July 12-15**, The Anson County 4-H will offer a **Cloverbud Day Camp** for youths ages 5-8. The cost is \$25 per youth. Participants do not have to be a member of the 4-H.

Anson County Chamber of Commerce  
P.O. Box 305 • 107-A E. Wade St.  
Wadesboro, N.C., 28170-0305  
Information: 704-694-4181  
Website: [www.ansoncounty.org](http://www.ansoncounty.org)  
E-mail: [ansonchamber@windstream.net](mailto:ansonchamber@windstream.net)

Sandy Bruney  
MBMC  
104 Lakeview Dr.  
Wadesboro NC 28170

**Discover Anson: A Great Place To Call Home**

**CHAMBERLINES, PAGE 4**

**July 2011**

**July 20, Two Events**-The American Red Cross will host a **Community Blood Drive** at the first Presbyterian Church from 1:30pm until 6:00pm. The Wadesboro Civitan Club is the sponsor for this event. The Anson Co. Arts Council will hold a **Bach's Lunch**.

**July 28**, Sonic Drive-In will host a **Car Show** from 6:00pm until 8:00pm.

*Please remember to go to the Chamber's web calendar for all events and activities.*

[www.ansoncounty.org](http://www.ansoncounty.org)



**HAVE A SAFE  
AND HAPPY  
4TH OF JULY!**

**Termites ■ Fleas ■ Roaches**  
**Moisture Control**  
**Automatic Temp Vents**



License # 446 P.W.  
Daytime Phone: 704-694-6207  
Toll-Free 1-800-955-3047  
204 S. Rutherford St., Wadesboro



**Pee Dee Electric  
Membership Corporation**

A Touchstone Energy® Cooperative

**We're working for you.**

575 U.S. Highway 52 South  
Wadesboro, N.C. 28170  
**704-694-2114**



**ANSON  
BANK & TRUST**

211 South Greene Street - P.O. Box 249  
Wadesboro, N.C. 28170-0249  
704-694-2122

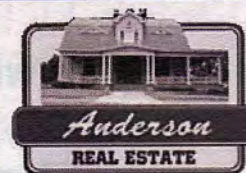
Member  
FDIC

[www.AnsonBankandTrust.com](http://www.AnsonBankandTrust.com)



*Anderson*

**REAL ESTATE**



- Homes
- Land
- Rentals

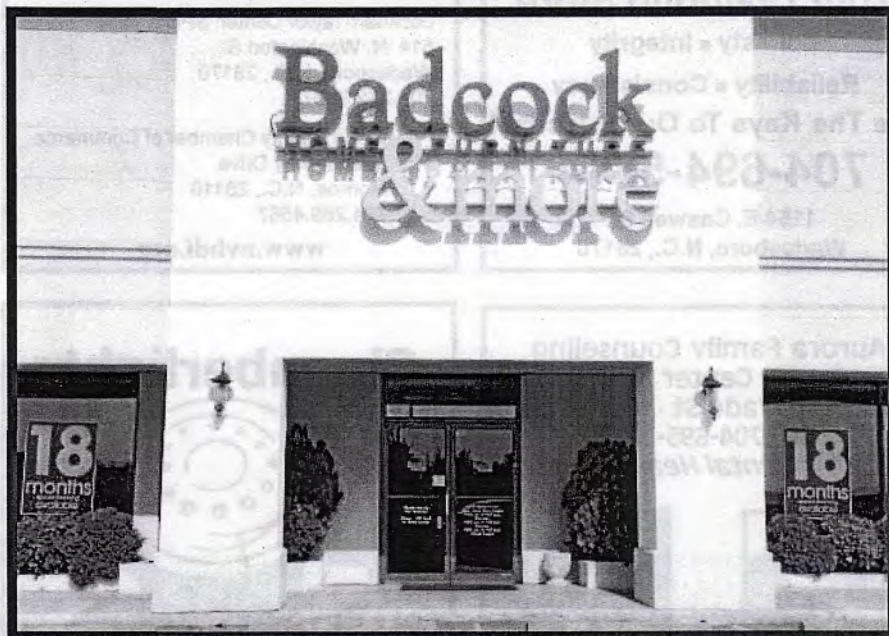
**704-694-5050**  
**(800) 948-1513**

[www.AndersonRealEstate.org](http://www.AndersonRealEstate.org)  
202 E. Morgan St. Wadesboro, N.C.



## Badcock & more HOME FURNITURE

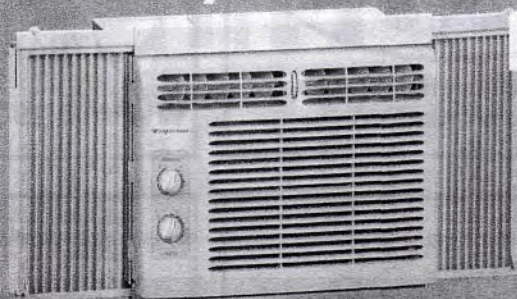
Located at  
U.S. 52-South  
Wadesboro, N.C.  
28170  
704-694-4178



Come see us today  
for all your cool  
summertime  
great deals!

**Store hours**  
**Monday-Wednesday, Friday**  
**9 a.m. to 6 p.m.**  
**Thursday 9 a.m. to 7 p.m.**  
**Saturday 9 a.m. to 5 p.m.**

*think summer... think Badcock  
for all your summer needs!*



### FRIGIDAIRE

air conditioners

starting at **\$139<sup>95</sup>**

5000 BTU 95843	\$139.95
8000 BTU 95844	\$239.95
10000 BTU 95845	\$299.95
12000 BTU 95846	\$359.95
25000 BTU 95847	\$699.95



**gas grill** **\$99<sup>95</sup>**  
90716  
white supplies last



**america's best grill** **\$129<sup>95</sup>**  
23207 reg. \$159.95  
500 sq. in., cast iron grates



**gas grill** **\$199<sup>95</sup>**  
103505 reg. \$299.95  
4,000 but/12,000 side burner,  
porcelain coated grates